



# SHI PRODUCT PASSPORT

Find products. Certify buildings.

SHI Product Passport No.:

**12895-10-1007**

## Rockpanel Fassadenpaneele Lines<sup>2</sup>

Product group: Facade cladding



Rockpanel – Part of ROCKWOOL Group  
Konstruktieweg 2  
6045 JD Roermond



### Product qualities:










*Köttner*

**Helmut Köttner**  
Scientific Director

Freiburg, 02 February 2026



# Contents

 SHI Product Assessment 2024	1
 QNG - Qualitätssiegel Nachhaltiges Gebäude	2
 DGNB New Construction 2023	3
 DGNB New Construction 2018	4
 BNB-BN Neubau V2015	5
 EU taxonomy	6
 BREEAM DE Neubau 2018	7
Product labels	8
Legal notices	9
Technical data sheet/attachments	10

The SHI Database is the first and only database for construction products whose comprehensive processes and data accuracy are regularly verified by the independent auditing company SGS-TÜV Saar





Product:

**Rockpanel Fassadenpaneele Lines<sup>2</sup>**

SHI Product Passport no.:

**12895-10-1007**



## SHI Product Assessment 2024

Since 2008, Sentinel Holding Institut GmbH (SHI) has been establishing a unique standard for products that support healthy indoor air. Experts carry out independent product assessments based on clear and transparent criteria. In addition, the independent testing company SGS regularly audits the processes and data accuracy.

Criteria	Product category	Assessment
SHI Product Assessment		Not relevant for assessment



Product:

**Rockpanel Fassadenpaneele Lines<sup>2</sup>**

SHI Product Passport no.:

**12895-10-1007**



## **QNG - Qualitätssiegel Nachhaltiges Gebäude**

The Qualitätssiegel Nachhaltiges Gebäude (Quality Seal for Sustainable Buildings), developed by the German Federal Ministry for Housing, Urban Development and Building (BMWSB), defines requirements for the ecological, socio-cultural, and economic quality of buildings. The Sentinel Holding Institut evaluates construction products in accordance with QNG requirements for certification and awards the QNG ready label. Compliance with the QNG standard is a prerequisite for eligibility for the KfW funding programme. For certain product groups, the QNG currently has no specific requirements defined. Although classified as not assessment-relevant, these products remain suitable for QNG-certified projects.

Criteria	Pos. / product group	Considered substances	QNG assessment
3.1.3 Schadstoffvermeidung in Baumaterialien	not applicable	not applicable	QNG ready - Not relevant for assessment



Product:

Rockpanel Fassadenpaneele Lines<sup>2</sup>

SHI Product Passport no.:

12895-10-1007



## DGNB New Construction 2023

The DGNB System (German Sustainable Building Council) assesses the sustainability of various types of buildings. It can be applied to both large-scale private and commercial projects as well as smaller residential buildings. The 2023 version sets high standards for ecological, economic, socio-cultural, and functional aspects throughout the entire life cycle of a building.

Criteria	No. / Relevant building components / construction materials / surfaces	Considered substances / aspects	Quality level
ENV 1.2 Local environmental impact, 03.05.2024 (3rd edition)	not applicable		Not relevant for assessment

Criteria	Assessment
ECO1.1 Life cycle cost (*)	May positively contribute to the overall building score
<b>Verification:</b> Broschüre Instandhaltung / Wartung / Reinigung	

Criteria	Assessment
ENV1.1 Climate action and energy (*)	May positively contribute to the overall building score
<b>Verification:</b> RockCycle®	

Criteria	No. / Relevant building components / construction materials / surfaces	Considered substances / aspects	Quality level
ENV 1.2 Local environmental impact, 29.05.2025 (4th edition)	not applicable		Not relevant for assessment



Product:

**Rockpanel Fassadenpaneele Lines<sup>2</sup>**

SHI Product Passport no.:

**12895-10-1007**



## DGNB New Construction 2018

The DGNB System (German Sustainable Building Council) assesses the sustainability of various types of buildings. It can be applied to both large-scale private and commercial projects as well as smaller residential buildings.

Criteria	No. / Relevant building components / construction materials / surfaces	Considered substances / aspects	Quality level
ENV 1.2 Local environmental impact	not applicable	not applicable	Not relevant for assessment



Product:

**Rockpanel Fassadenpaneele Lines<sup>2</sup>**

SHI Product Passport no.:

**12895-10-1007**



## **BNB-BN Neubau V2015**

The Bewertungssystem Nachhaltiges Bauen (Assessment System for Sustainable Building) is a tool for evaluating public office and administrative buildings, educational facilities, laboratory buildings, and outdoor areas in Germany. The BNB was developed by the former Federal Ministry for the Environment, Nature Conservation, Building and Nuclear Safety (BMUB) and is now overseen by the Federal Ministry for Housing, Urban Development and Building (BMWSB).

Criteria	Pos. / product type	Considered substance group	Quality level
1.1.6 Risiken für die lokale Umwelt			Not relevant for assessment



Product:

**Rockpanel Fassadenpaneele Lines<sup>2</sup>**

SHI Product Passport no.:

**12895-10-1007**



## EU taxonomy

The EU Taxonomy classifies economic activities and products according to their environmental impact. At the product level, the EU regulation defines clear requirements for harmful substances, formaldehyde and volatile organic compounds (VOCs). The Sentinel Holding Institut GmbH labels qualified products that meet this standard.

Criteria	Product type	Considered substances	Assessment
DNSH - Pollution prevention and control		Substances according to Annex C	EU taxonomy compliant
<b>Verification:</b> Herstellererklärung vom 30.10.2024			





Product:

**Rockpanel Fassadenpaneele Lines<sup>2</sup>**

SHI Product Passport no.:

**12895-10-1007**



## BREEAM DE Neubau 2018

BREEAM (Building Research Establishment Environmental Assessment Methodology) is a UK-based building assessment system that evaluates the sustainability of new constructions, refurbishments, and conversions. Developed by the Building Research Establishment (BRE), the system aims to assess and improve the environmental, economic, and social performance of buildings.

Criteria	Product category	Considered substances	Quality level
Hea 02 Indoor Air Quality			Not relevant for assessment



Product:

**Rockpanel Fassadenpaneele Lines<sup>2</sup>**

SHI Product Passport no.:

**12895-10-1007**



## Product labels

In the construction industry, high-quality materials are crucial for a building's indoor air quality and sustainability. Product labels and certificates offer guidance to meet these requirements. However, the evaluation criteria of these labels vary, and it is important to carefully assess them to ensure products align with the specific needs of a construction project.



Products bearing the Sentinel Holding Institute QNG-ready seal are suitable for projects aiming to achieve the "Qualitätssiegel Nachhaltiges Gebäude" (Quality Seal for Sustainable Buildings). QNG-ready products meet the requirements of QNG Appendix Document 3.1.3, "Avoidance of Harmful Substances in Building Materials." The KfW loan program Climate-Friendly New Construction with QNG may allow for additional funding.



Product:

**Rockpanel Fassadenpaneele Lines<sup>2</sup>**

SHI Product Passport no.:

**12895-10-1007**



## Legal notices

(\*) These criteria apply to the construction project as a whole. While individual products can positively contribute to the overall building score through proper planning, the evaluation is always conducted at the building level. The information was provided entirely by the manufacturer.

---

Find our criteria here: <https://www.sentinel-holding.eu/de/Themenwelten/Pr%C3%BCfverfahren%20f%C3%BCr%20Produkte>

---

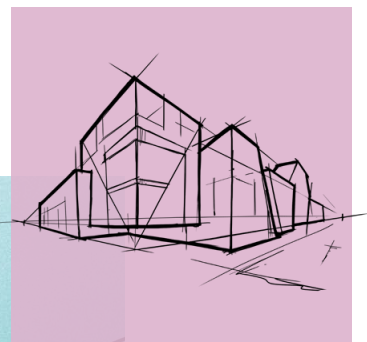
The SHI Database is the first and only database for construction products whose comprehensive processes and data accuracy are regularly verified by the independent auditing company SGS-TÜV Saar



### Publisher

Sentinel Holding Institut GmbH  
Bötzingen Str. 38  
79111 Freiburg im Breisgau  
Germany  
Tel.: +49 761 590 481-70  
[info@sentinel-holding.eu](mailto:info@sentinel-holding.eu)  
[www.sentinel-holding.eu](http://www.sentinel-holding.eu)

# Safe Use Instructions Sheet



# Rockpanel

## Safe Use Instructions Sheet

### 1. Product and company identification

Generic product name	ROCKPANEL	
Recommended use	Robust and flexible board material for use in facades, roof edge finishing, fascias and other detailing.	
Producer	ROCKWOOL B.V. / ROCKPANEL Konstruktieweg 2 6045 JD ROERMOND THE NETHERLAND	Tel.: +31 (0)475 353 000 Fax: +31 (0)475 353 550 Email: info@rockpanel.com
Emergency telephone number	+31 (0)475 353 000	

### 2. Hazards identification

Most important hazards	There is no Hazard statement associated with this product.
Specific hazards	Non applicable.

### 3. Composition / information on ingredients

Substance	C.A.S. number <sup>(3)</sup>	Amount weight (%)	Classification and labelling (Regulation (CE) N° 1272/2008)	Classification and labelling (European directive 67/548/EEC)
Stone wool <sup>(1)</sup>	287922-11-6	84 – 92%	Not classified <sup>(2)</sup>	Not classified
Binder		7 – 15%	Not classified	Not classified
Cured Coating		0 – 2.5%	Not classified	Not classified

(1): Man-made vitreous (silicate) fibres with random orientation with alkaline oxide and alkali earth oxide (Na<sub>2</sub>O+K<sub>2</sub>O+CaO+MgO+BaO) content greater than 18% by weight and fulfilling one of the nota Q conditions

(2): Non classified H351 "suspected of causing cancer". Stone wool fibres are not classified carcinogenic according to the nota Q of the Directive 97/69/EEC and the regulation n° 1272/2008 (page 335 of the JOCE L353 of December 31, 2008)

(3): C.A.S. : Chemical Abstract Service

### 4. First aid measures

#### Information according to the different exposure route for dust:

Inhalation	Remove from exposure. Rinse the throat and blow nose to clear dust.
Skin contact	If itching occurs, remove contaminated clothing and wash skin gently with cold water and soap.
Eyes contact	Rinse abundantly with water for at least 15 minutes.
Ingestion	Drink plenty of water if accidentally ingested.

If any adverse reaction or discomfort continues from any of the above exposures, seek medical professional advice.

(1): The European Regulation (ER) on Chemicals N° 1907/2006 (REACH) enforced on June 1st 2007 requires Material Safety Data Sheet (MSDS) only for hazardous substances and mixtures/preparations. Mineral wool products (like panels), are articles under REACH and therefore, MSDS is not legally required. Nevertheless, ROCKWOOL decides to provide its customers with the appropriate information for assuring safe handling and use of mineral wool through this Safe Use Instructions Sheet.

# Rockpanel

## Safe Use Instructions Sheet

### 5. Fire fighting measures

Suitable extinguishing media	ROCKPANEL board material is subject to thorough testing and is a fire-safe building material. In the event of a fire the mineral wool structure of ROCKPANEL board material remains fully intact. There is absolutely no drop-formation and the risk of fire spreading is prevented. Packaging materials or facings may however be combustible. Suitable extinguishing media; water, foam, carbon dioxide (CO <sub>2</sub> ), and dry powder. In large fires in poorly ventilated areas or involving packaging materials respiratory protection / breathing apparatus may be required.
------------------------------	--

### 6. Accidental release measures

Personal precautions	In case of presence of high concentrations of dust, use the same personal protective equipment as mentioned in section 8.
Environmental protection	Not relevant.
Methods for cleaning up	Clean with vacuum or dampen with water spray prior to sweeping up.

### 7. Handling and storage

#### Handling

Technical measures	No specific measures. ROCKPANEL advises that users should wear standard personal protection equipment during sawing. Use hard point hand saw. Circular saw e.g. fine-toothed Widea saw blade. Fretsaw, e.g. fine-toothed saw blade or a saw blade with tungsten granules. We advice to use dust-reducing equipment in combination with an exhaust hood in a well ventilated room when sawing indoor. In case of outdoor sawing we advice to use dust-reducing if a power tool is used, it must be equipped with efficient air suction. Position the saw installation so that the wind blows away the released dust.
Precautions	Ensure adequate ventilation of workplace. See section 8.
Safe handling advice	Not relevant.

#### Storage

Technical measures	No special measures necessary.
Suitable storage condition	ROCKPANEL boards are insensitive to moisture. Nevertheless it is recommended that the board material be stored on a flat pallet in dry, flat, frost-proof and protected conditions. Never stack more than two pallets on top of each other. The panels should be raised when being machined. The panels should not be slid over one another. Protective foam membranes should be placed between the sheets again to protect the surface layer, for example when the panels are stacked after having been sawn.
Incompatible materials	None.
Packaging material	Products are packed in polyethylene film on wooden pallet.

# Rockpanel

## Safe Use Instructions Sheet

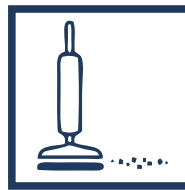
### 8. Exposure controls / personal protection

Exposure Limit Value	None at European level.
Exposure controls	No specific requirements.
<b>Individual protection equipments</b>	
Respiratory protection	When working in unventilated area or during operations which can generate emission of any dust, wear a disposable face mask. Type in accordance with EN 149 FFP1 is recommended.
Hand protection	Use gloves to avoid itching in conformity with EN 388
Eyes protection	Wear goggles when working overhead. Eye protection according with EN 166 is advised.
Skin protection	When working in unventilated area we recommend to cover exposed skin.
Hygiene measures	Rinse in cold water before washing

The following sentence and pictograms are printed on packaging.  
The mechanical effect of fibres in contact with skin may cause temporary itching



Ventilate working area if possible.



Clean area using vacuum equipment.



Waste should be disposed of according to local regulations.



Wear goggles when working overhead.



Cover exposed skin.  
When working in unventilated area wear disposable face mask.



Rinse in cold water before washing.

# Rockpanel

## Safe Use Instructions Sheet

### 9. Physical and chemical properties

Physical state	Solid.
Form	Articles in panel or plank form.
Colour	Grey green (basic board).
Odour	Not applicable.
pH	Not applicable.
Boiling point	Not relevant.
Flash point	Not relevant.
Flammability	Not relevant.
Explosive properties	Not relevant.
Density	From 1000 to 1300 kg/m <sup>3</sup> .
Water solubility	Generally chemically inert and insoluble in water.
Fat solubility	Not applicable.
Melting point	> 1000 °C.

### 10. Stability and reactivity

Stability	Binder will decompose above ca. 200°C.
Dangerous reactions	None, when the product is applied according to recommended use (see 1.).
Hazardous decomposition products	None, when the product is applied according to recommended use (see 1.).

### 11. Toxicological information

Acute effect	The mechanical effect of fibres in contact with the skin can cause a temporary itching.
Carcinogenic effect	Classification not applicable for mineral wool in this product; in accordance with the directive 97/69/EC and European Regulation 1272/2008, nota Q. (see 15.)

### 12. Ecological information

This product is not expected to cause harm to animals or plants during normal conditions of use.  
Acute effect

### 13. Disposal considerations

Waste from residues	Dispose of in accordance with regulations and procedures in force in country of use or disposal.
Dirty packaging	Dispose of in accordance with local regulations.
Code from European Waste Catalogue	17 06 04.



# Rockpanel

## Safe Use Instructions Sheet

### 14. Transport information

International regulations	No specific regulations.
---------------------------	--------------------------

### 15. Regulatory information

The European directive 97/69/EC replaced by the regulation (EC) N° 1272/2008 concerning the classification, labelling and packaging of the substance and the mixtures does not classify Stone wool fibres as hazardous, if they are in compliance with the note Q of this Regulation.

The note Q specifies that classification as carcinogenic does not apply if:

- a short-term biopersistence test by inhalation has shown that fibres longer than 20µm have a weight half life **less than 10 days**, or
  - a short-term biopersistence test intra-tracheal instillation has shown fibres longer than 20µm have a weighted half life **less than 40 days**, or
  - an appropriate intra-peritoneal test has shown no evidence of excess carcinogenicity, or
  - a suitable long term inhalation test has shown absence of relevant pathogenicity or neoplastic changes.
- Binder will decompose above ca. 200°C.

### 16. Other information

The Stone wool fibres of this product are exonerated from the carcinogenic classification according to the European directive 97/69/CE and the Regulation (EC) 1272/2008 if they fulfil one of the criteria of the nota Q of these texts. All products manufactured by Rockpanel are made of non-classified fibres and are certified by EUCEB.

EUCEB, European Certification Board of Mineral Wool Products - [www.euceb.org](http://www.euceb.org), is a voluntary initiative by the mineral wool industry. It is an independent certification authority that guarantees that products are made of fibres, which comply with the exoneration criteria for carcinogenicity (Note Q) of the Directive 97/69/EC and the Regulation (EC) 1272/2008. To ensure that fibres comply with the exoneration criteria all tests and supervision procedures are carried out by independent, expert qualified institutions. EUCEB ensures that the producers of mineral wool have put in place self-control measures.

The mineral wool producers commit to EUCEB to:

- supply sampling and analysis reports established by laboratories recognized by EUCEB, proving that the fibres comply with one of the four criteria of exoneration described in Note Q of the Directive 97/99/EC,
- be controlled, twice per year, of each production unit by an independent third party recognized by EUCEB (sampling and conformity to the initial chemical composition),
- put in place procedures of internal self-control in each production unit.

Persons who wish to obtain more detailed information have to contact the producer (see address on the first page of this sheet) Information given in this document is on the state of our knowledge regarding this material as January 4th, 2021. It is given in good faith.

The attention of users is drawn to possible risks taken when the product is used for other application than the ones it has been designed for.

Date: 23 July 2025

**Declaration of Absence of Substances of Very High Concern (SVHCs) and CMR substances**

We, Rockpanel, hereby declare that our products do not contain any Substances of Very High Concern (SVHCs) as outlined under Article 33 of the REACH Regulation (EC) No 1907/2006.

Our review and assessment are based on the latest Candidate List published by the European Chemicals Agency (ECHA). We ensure that our products comply with the requirements and obligations under REACH, and we are committed to maintaining the highest standards of safety and regulatory compliance.

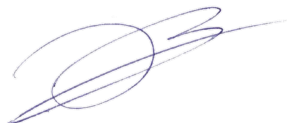
Our products do not contain any CMR (carcinogenic mutagenic reprotoxic) substances of categories 1A/1B in a concentration above 0.1%.

This counts for all Rockpanel board compositions.

Should you need any further information or have any questions regarding this declaration, please feel free to contact us.

Thank you for your attention to this matter.

Sincerely,



John Relou M.Sc.

Technical Marketing Manager / PAO

ROCKWOOL BV / Rockpanel

[john.relou@rockpanel.com](mailto:john.relou@rockpanel.com)

**Part of the ROCKWOOL Group**