



SHI PRODUCT PASSPORT

Find products. Certify buildings.

SHI Product Passport No.:

14401-10-1003

PowerFloor Slim

Product group: Surface heating systems



Wolf Bavaria GmbH
Gutenbergstraße 8
91560 Heilsbronn



Product qualities:



Köttner

Helmut Köttner
Scientific Director
Freiburg, 15 December 2025



Product:

PowerFloor Slim

SHI Product Passport no.:

14401-10-1003



Contents

■ QNG - Qualitätssiegel Nachhaltiges Gebäude	1
■ DGNB New Construction 2023	2
■ DGNB New Construction 2018	3
Product labels	4
Legal notices	5
Technical data sheet/attachments	6

The SHI Database is the first and only database for construction products whose comprehensive processes and data accuracy are regularly verified by the independent auditing company SGS-TÜV Saar





Product:

PowerFloor Slim

SHI Product Passport no.:

14401-10-1003



QNG - Qualitätssiegel Nachhaltiges Gebäude

The Qualitätssiegel Nachhaltiges Gebäude (Quality Seal for Sustainable Buildings), developed by the German Federal Ministry for Housing, Urban Development and Building (BMWSB), defines requirements for the ecological, socio-cultural, and economic quality of buildings. The Sentinel Holding Institut evaluates construction products in accordance with QNG requirements for certification and awards the QNG ready label. Compliance with the QNG standard is a prerequisite for eligibility for the KfW funding programme. For certain product groups, the QNG currently has no specific requirements defined. Although classified as not assessment-relevant, these products remain suitable for QNG-certified projects.

Criteria	Pos. / product group	Considered substances	QNG assessment
3.1.3 Schadstoffvermeidung in Baumaterialien	not applicable	not applicable	QNG ready - Not relevant for assessment



Product:

PowerFloor Slim

SHI Product Passport no.:

14401-10-1003



DGNB New Construction 2023

The DGNB System (German Sustainable Building Council) assesses the sustainability of various types of buildings. It can be applied to both large-scale private and commercial projects as well as smaller residential buildings. The 2023 version sets high standards for ecological, economic, socio-cultural, and functional aspects throughout the entire life cycle of a building.

Criteria	No. / Relevant building components / construction materials / surfaces	Considered substances / aspects	Quality level
ENV 1.2 Local environmental impact, 03.05.2024 (3rd edition)			Not relevant for assessment

Criteria	No. / Relevant building components / construction materials / surfaces	Considered substances / aspects	Quality level
ENV 1.2 Local environmental impact, 29.05.2025 (4th edition)			Not relevant for assessment



Product:

PowerFloor Slim

SHI Product Passport no.:

14401-10-1003



DGNB New Construction 2018

The DGNB System (German Sustainable Building Council) assesses the sustainability of various types of buildings. It can be applied to both large-scale private and commercial projects as well as smaller residential buildings.

Criteria	No. / Relevant building components / construction materials / surfaces	Considered substances / aspects	Quality level
ENV 1.2 Local environmental impact			Not relevant for assessment



Product:

PowerFloor Slim

SHI Product Passport no.:

14401-10-1003



Product labels

In the construction industry, high-quality materials are crucial for a building's indoor air quality and sustainability. Product labels and certificates offer guidance to meet these requirements. However, the evaluation criteria of these labels vary, and it is important to carefully assess them to ensure products align with the specific needs of a construction project.



Products bearing the Sentinel Holding Institute QNG-ready seal are suitable for projects aiming to achieve the "Qualitätssiegel Nachhaltiges Gebäude" (Quality Seal for Sustainable Buildings). QNG-ready products meet the requirements of QNG Appendix Document 3.1.3, "Avoidance of Harmful Substances in Building Materials." The KfW loan program Climate-Friendly New Construction with QNG may allow for additional funding.



Product:

PowerFloor Slim

SHI Product Passport no.:

14401-10-1003



Legal notices

(*) These criteria apply to the construction project as a whole. While individual products can positively contribute to the overall building score through proper planning, the evaluation is always conducted at the building level. The information was provided entirely by the manufacturer.

Find our criteria here: <https://www.sentinel-holding.eu/de/Themenwelten/Pr%C3%BCfverfahren%20f%C3%BCr%20Produkte>

The SHI Database is the first and only database for construction products whose comprehensive processes and data accuracy are regularly verified by the independent auditing company SGS-TÜV Saar

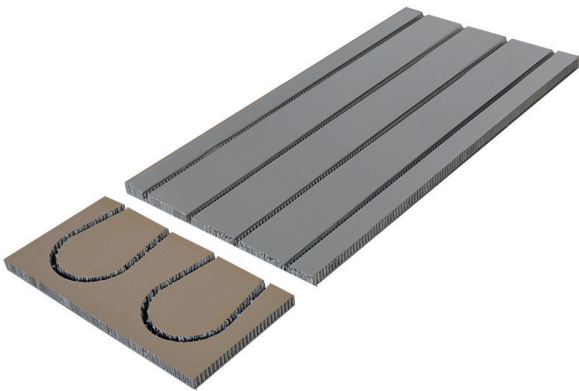


Publisher

Sentinel Holding Institut GmbH
Bötzingen Str. 38
79111 Freiburg im Breisgau
Germany
Tel.: +49 761 590 481-70
info@sentinel-holding.eu
www.sentinel-holding.eu

Technische Daten

Fußbodenheizungselemente
PowerFloor Slim



Rohrabstand 125 mm

Dimensionen PowerFloor Slim	L x B x H [mm]	Rohrabstand [mm]	Aluminium-Schicht [mm]	Gewicht [in kg/m ²]	Druckfestigkeit [in kPa]
Gerades Element	1000 x 500 x 30	125	0,15	2,6	ca. 500
Umlenkelement	250 x 500 x 30	125	-	2,3	ca. 500

Lagerung:

- PowerFloor Elemente ausschließlich im Innenbereich liegend, plan, trocken und frostfrei lagern.
- Am Einbauort 24 Stunden zur Akklimatisierung lagern.
- Kanten vor Beschädigung schützen

Technische Kenndaten	
Dynamische Steifigkeit s'	437,9 MN/m ³
Baustoffklasse nach DIN EN 13501-1	E
Wabenstruktur	sinusförmig
Breite der Aludickfolie	490 mm
Wärmeleitfähigkeit	0,1 W/(mK)
Geeignet für Rohrdurchmesser von:	16 mm